



Cycling out here, in the center of Lake Hamana

A full range of experiences to be had in the Hamamatsu and Lake Hamana area



Wrapping cloth making experience with "Hamamatsu chusen some"



The "Hamamatsu chusen some" is a traditional cloth dyeing technique, and a representative craft of Hamamatsu, city of textiles. Take a tour of the factory and dye a *tenugui* (wrapping cloth) right there. Create your own unique color by combining different colors, and make an original *tenugui* of your very own.

The specialty of Lake Hamana! Try an eel catching and broiling experience

Unagi (freshwater eel) is a very well-known specialty product of Lake Hamana. Live eels are released into a shallow pond where you can catch them with your bare hands, allowing you to feel the agile movement and slippery skin of eels first hand. You can also experience the whole process from catching an eel to skewering it, basting it with sauce, and cooking it over a grill, before eating your finished eel on a bed of rice.



Explore Hamamatsu and Lake Hamana on a rental bicycle

Hamamatsu and Lake Hamana are blessed with a warm climate year round, and there are plenty of rental bicycles available, so you can easily enjoy sightseeing on a bicycle. There are many ways to enjoy your trip, such as attempting the ride all the way around the lake, or riding in the direction of Tenryu. Choose the model that suits you, from proper road bikes to city bikes, and even electric assist bikes. We recommend using a rental bicycle if you come to Hamamatsu or Lake Hamana.



●Rental Bicycle Contacts

Kiga Station Terminal ☎053-522-4720

Kanzanji Terminal ☎053-487-0152

Mikkabi Station Terminal ☎053-525-0102

Bentenjima Seaside Park Terminal ☎053-596-4187

Nagisaen Terminal ☎053-592-1525

Tenryu Hamanako Railroad ☎053-925-2275

Tenryu Futamata Sta. ☎053-925-2275

Kaikokan Terminal (Kosai) ☎053-594-6624

Araimachi Sta. West Terminal (Kosai) ☎053-594-5022

Hamamako Cycle (Kosai) ☎080-9116-3196



Rental bicycles other than the above:

Kanasashi Rental Cycle ☎053-542-0400

(Tenryu Hamanako Railroad Kanasashi Station)

*Please contact each number for details such as business hours and bicycle types.

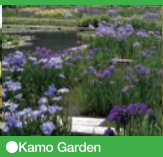
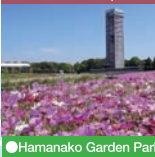
Amazing Garden Lake Hamana: Tour the fantastic four seasons, starting from Lake Hamana

"Amazing Garden Lake Hamana" consists of seven gardens with flowers and greenery in Hamamatsu, Lake Hamana and Western Shizuoka Prefecture. It has been certified for the "Garden Collaboration Promotion Plan" by the Ministry of Land Infrastructure, Transport and Tourism. Come enjoy a moving experience with great value using a common admission ticket valid for two days.



●Hamamatsu Flower Park ●Ryoutanji Temple

●Hamamatsu Castle Park, Sointei



●Hamamako Garden Park

●Kasui Yuri no Sono

●Kamo Garden

●Okuni Shrine



Hamamatsu & Lake Hamana tourism information site
Through Hamamatsu, Meet Japan



Hamamatsu and Lake Hamana Travel Guide

Hamamatsu City and Kosai City

Hamamatsu and Lake Hamana Tourism Bureau

Welcome to Hamamatsu and Lake Hamana Area!

Lake Hamana became a brackish lake after a massive earthquake made an outlet that connected it to the open sea 500 years ago. Now the lake is incredibly diverse with 800 species of organisms, as nutrients from the mountains flow down the Tenryu River and mix with nutrients from the ocean.

Distinct culture and history, as well as highly unique industries, have been nurtured in the region by the abundance of nature and mild climate centered on Lake Hamana, geographic location between Tokyo and Osaka, and enterprising spirit and rich imagination. We hope you take this pamphlet with you to enjoy a better time in Hamamatsu and Lake Hamana.

Hamamatsu Urban Area

Downtown Hamamatsu is the hub of the city's economy, culture and transportation network, as well as the location of various city functions such as governmental body and information service industry.



Around Hamamatsu Station (Naka-ward)

Hamamatsu/Hamakita Area (Outskirts of Hamamatsu / Hamakita)

Hamamatsu is well-known for its industrial production, particularly musical instruments, motorcycles, and textiles. In this area, there are plant and flower theme parks, history museums, and industrial tourism facilities where you can visit local factories.



SUZUKI PLAZA (Zora-cho, Minami-ward)

Omote (Southern) Lake Hamana Area (Kanzan i, Yuto, Maisaka)

This area, blessed with the natural beauty of the Enshu Sea and Lake Hamana, is known as the entrance to Lake Hamana. Abounding with scenic spots, this area is perfect for enjoying swimming in the ocean, fishing, and other marine sports, with to mention trying its abundant fresh seafood. In Kanzanji, Yuto, and Bentejima Hot Springs there are many nice hotels and inns.



Bentejima (Maisaka-cho, Nishi-ward)

Oku (Northern) Lake Hamana Area (Hosoe, Inasa, Mikkabi, Miyakoda)

Oku Lake Hamana Area offers the tranquility of the lakefront and the rolling hills beyond the lake. Here you can enjoy nature all year around. It also has many famous temples and gardens, with an extensive array of sightseeing highlights and historical artifacts associated with the Ii clan. Some popular activities to try are fruit picking and flower viewing.



Gardens of Ryotanji (Inasacho, Kita Ward)

Hokuen (Northern) Area (Tenryu, Haruno, Sakuma, Misakubo, Tatsuyama)

The Hokuen Area is surrounded by beautiful green forests nourished by the magnificent flow of the Tenryu River. Various types of traditional culture as well as the simple lifestyle of the local people can be seen here.



Fuku Akino Art Museum (Futamatacho, Tenryu Ward)

Kosai Area

In this area you can enjoy the blessings of both the sea and the lake, such as by fishing in Lake Hamana and the Enshu Sea. Each region has its own fishing port, and there are many restaurants where you can enjoy fresh seafood. You can also enjoy walking around the old post town, which is rich in the atmosphere of the Edo Period (1603 – 1868), as it has many relics left from that era.



Arai Barrier (Araicho, Kosai City)

CONTENTS

“Hamamatsu and Lake Hamana
Travel Guide”

Hamamatsu and Lake Hamana Area Map & Access	02
---	----

Hamamatsu Urban Area	04
• Map of the Hamamatsu Central Area	06

Hamamatsu/Hamakita Area	
• Outskirts of Hamamatsu	08
• Tour the focused museums of Hamamatsu-	09
• Hamakita	10

Omote Lake Hamana Area	
• Kanzanji	12
• Yuto	14
• Maisaka~The Tropical Ambience of Omote Lake Hamana~	15

Oku Lake Hamana Area	
• Hosoe	16
• ~Flower viewing around Oku Hamanako ~	17
• Inasa	18
• Mikkabi • Miyakoda	19

Hokuen Area	
• Tenryu	20
• Haruno	22
• Tatsuyama	23
• Sakuma	24
• Misakubo	25

Kosai Area	26
-------------------	----

Industrial Tourism in Hamamatsu and Lake Hamana	30
--	----

The Tastes of Hamamatsu and Lake Hamana	32
• Experience Calender of Hamamatsu and Lake Hamana	34,35
• Festival Calender of Hamamatsu and Lake Hamana	36,37
• Guide to Transportation around Hamamatsu City and Kosai City	38,39
• Public Facilities / Tourism Information Inquiries	40,41

《Do you need sightseeing information
of Hamamatsu and Lake Hamana?》

Service is
available in
English

Hamamatsu Tourist Information Center

Here you can find information on the tourist spots around Hamamatsu and Lake Hamana areas, the events for each season, access details for tourist attractions, etc. Volunteer guide service for sightseeing is also available.



Located within JR Hamamatsu Station: TEL 053-452-1634
Business hours - 9:00~19:00 (open throughout the year)



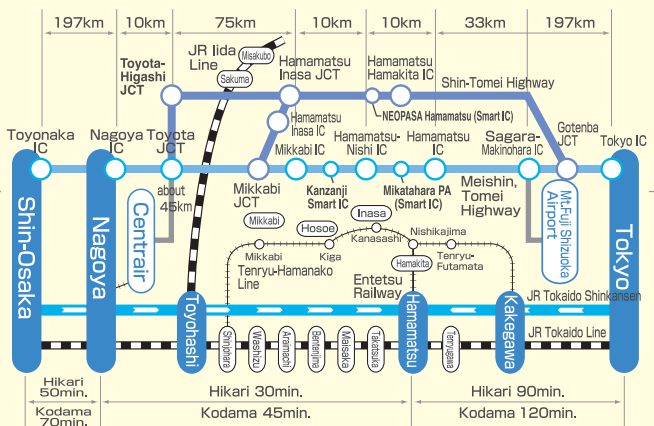
Hamamatsu and Lake Hamana Area Map & Access

Transportation Guide

Long-distance Bus

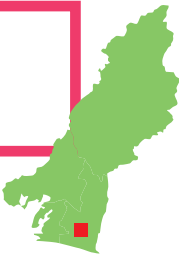
- Tomei Highway Bus
 - From Tokyo Station to Hamamatsu Station (during the day) - Approx. 4hrs. 19min. (night bus) - Approx. 7hrs. 15min. from Tokyo Station to Tomei Hamamatsu Kita (North) Bus Stop (during the day) - Approx. 3hrs. 44min.
 - From Shinjuku Station west exit to Hamamatsu Station (during the day) - Approx. 4hrs. 19min.
 - From Osaka Station to Hamamatsu Station (during the day) - Approx. 4hrs. 42min. (Entetsu, JR West)
 - From Sannomiya Bus Terminal to Hamamatsu Station (night bus) - Approx. 8 hrs. 11min. (From Kyoto Station - Approx. 5hrs. 12min. From Osaka Station - Approx. 6hrs. 21 min.)
- ※ The travel times listed are the fastest options.

Meishin, Tomei Highway



JR Tokaido Shinkansen

Hamamatsu Urban Area



This is the downtown area where JR Hamamatsu Station, the entrance to the city, is located. Here you can enjoy shopping, eating and drinking, while walking around the area. From downtown, some tourist spots such as Hamamatsu Castle and the Museum of Musical Instruments may be visited leisurely on foot.

Hamamatsu Castle & Hamamatsu Castle Park

MAP 06 A1

This castle is called the "Castle of Success", because Tokugawa Ieyasu, the first "Shogun" (General) of the Tokugawa family, lived here for 17 years as a youth. Towards the end of March, approximately 360 cherry trees surrounding the Castle Tower begin to bloom and many people gather here for cherry blossom viewing. We also recommend taking a stroll in the Japanese garden, which shows a different side in every season.



☎ 053-453-3872

👤 Adults ¥200, free for jr. high school students and younger, disabled people, and those aged 70 and older

📅 Dec.29~31

🕒 8:30~16:30 (Hamamatsu Castle)

Hamamatsu City Museum of Musical Instruments

MAP 07 D3

This museum is the only public museum of musical instruments in Japan, maintaining an exhibition of approximately 1,500 musical instruments from all over the world. The traditional Japanese musical instruments, such as Koto, Shakuhachi (Japanese bamboo flute), as well as the European luxury pianos from the 19th century are well worth seeing.



☎ 053-451-1128

👤 Adults ¥800, high school students ¥400, free for jr. high school students, disabled people, and those aged 70 and older

📅 Second and fourth Wednesdays of each month (if a national holiday, the following day, and open every day in August)

New Year's holidays (Dec. 29 to Jan. 3) and some temporary closures

🕒 9:30~17:00

ACT Tower Observation Gallery

MAP 07 D3

The observation deck on the 45th floor of the Act Tower stands 185 meters above the ground and offers one of the best views in the Tokai district. Visitors can enjoy the breathtaking view of the entire urban area, the Enshu Coast in the south, the Southern Alps in the north, and on a clear day, Mt Fuji!

☎ 053-459-0111 (Okura Act City Hotel Hamamatsu)

👤 Adults (jr. high school students and older) ¥500, elementary school students ¥300. People who have a disability certificate: Adults (jr. high school students and older) ¥300, elementary school students ¥150

🕒 10:00~18:00 (last admission - 17:30)



Hamamatsu Municipal Museum of Art

MAP 06 A1

This art museum patterned with bricks is located within Hamamatsu Castle Park. In addition to works by local artists, the collection includes many glass pictures and some of the early Japanese woodblock prints of Hiroshige Ando (Ukiyo-e prints).

☎ 053-454-6801

👤 Adults ¥300 yen, high school students ¥150, free for elementary and jr. high school students, seniors aged 70 years and older, disabled people, and one caregiver (only for a permanent exhibition)

📅 Mondays (Tuesday instead if Monday is a national holiday), days following national holidays, New Year's holidays (Dec.29~Jan.3), and exhibit change days

🕒 9:30~17:00



Shointei Tea Ceremony House

MAP 06 A1

Shointei is an authentic tea room opened in one corner of Hamamatsu Castle Park. In the main Japanese garden designated by world famous architect Yoshio Taniguchi, you can hear the murmur of a brook flowing over small waterfalls and between rocks. There is also a sitting area in the part of the garden leading to the annex, Hagian, and you can feel the true heart of the tea ceremony in a space furnished with a stone washbasin, lanterns, and stepping stones. You can also enjoy the tea ceremony as one stop on a stroll around Hamamatsu Castle Park, following its historic concourse.



☎ 053-473-4310

📅 Mondays, December 29 to January 3 (open on national holidays)

👤 400 yen (Served with sweets, tax included) 🕒 10:00~16:00 (Open Hours: 9:30~17:00)

Ryounji Temple

MAP 09 A1

This temple of the Rinzai sect of Buddhism is rich in both nature and history, stretching along the shore of Lake Sanaru, an oasis in the urban area of Hamamatsu City. It features a garden designed by Yasuo Kitayama, who worked on the Japanese garden at the Expo 2005 Aichi Japan. The highlight of the temple is "The World's Largest Heart Sutra" (measuring 4 meters long by 16 meters wide), the masterpiece by Shoko Kanazawa, a talented calligrapher who has Down syndrome.

☎ 053-447-1231

👤 Free



Zudaji Temple

MAP 09 B2

A temple of the Shingon sect of Buddhism, said to be the oldest temple in Hamamatsu City. The surrounding area is also called Zudaji Castle, and has the residence of the Matsushita family, warlord vassals of the Imagawa family. This was the first government service post of Toyotomi Hideyoshi, who unified Japan in the late 16th century. This was also the childhood home of Ii Naomasa, who was raised by Ii Naotora and became one of the four great generals who served Tokugawa Ieyasu. Here you can experience esoteric practices of Buddhism, such as Ajikan, a breathing exercise method of meditation based on Indian yoga.

☎ 053-463-8170

👤 Free (There is a fee for the Ajikan experience)



Hamamatsu Science Museum "Mirai-ra"

MAP 07 D3

The museum is divided into six themed areas, including nature, space, sound, and light, designed to stimulate interest in the sciences.

Many events are held here, including concerts held in the 20 meter diameter whole-sky planetarium.

☎ 053-454-0178

👤 Adults: 600yen, high school students: 300 yen, jr. high school students and younger: Free

*Planetarium and special exhibits require separate entry fees

📅 Mondays (closed on national holidays), open on Mondays during the New Year's holidays and certain periods of the summer

🕒 9:30~17:00 (July 20 to September 1: 18:00)



Hamamatsu Diorama Factory

MAP 06 B3

See the permanent exhibition of works by Takuji Yamada, a landscape artist from Hamamatsu who expresses nostalgic scenery of the Showa era (mid 20th century) using scale models.

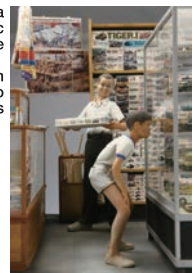
In addition to the Showa series, there are works from various genres on display, from Gundam plastic models, to special effects heavy action shows, and military models as well.

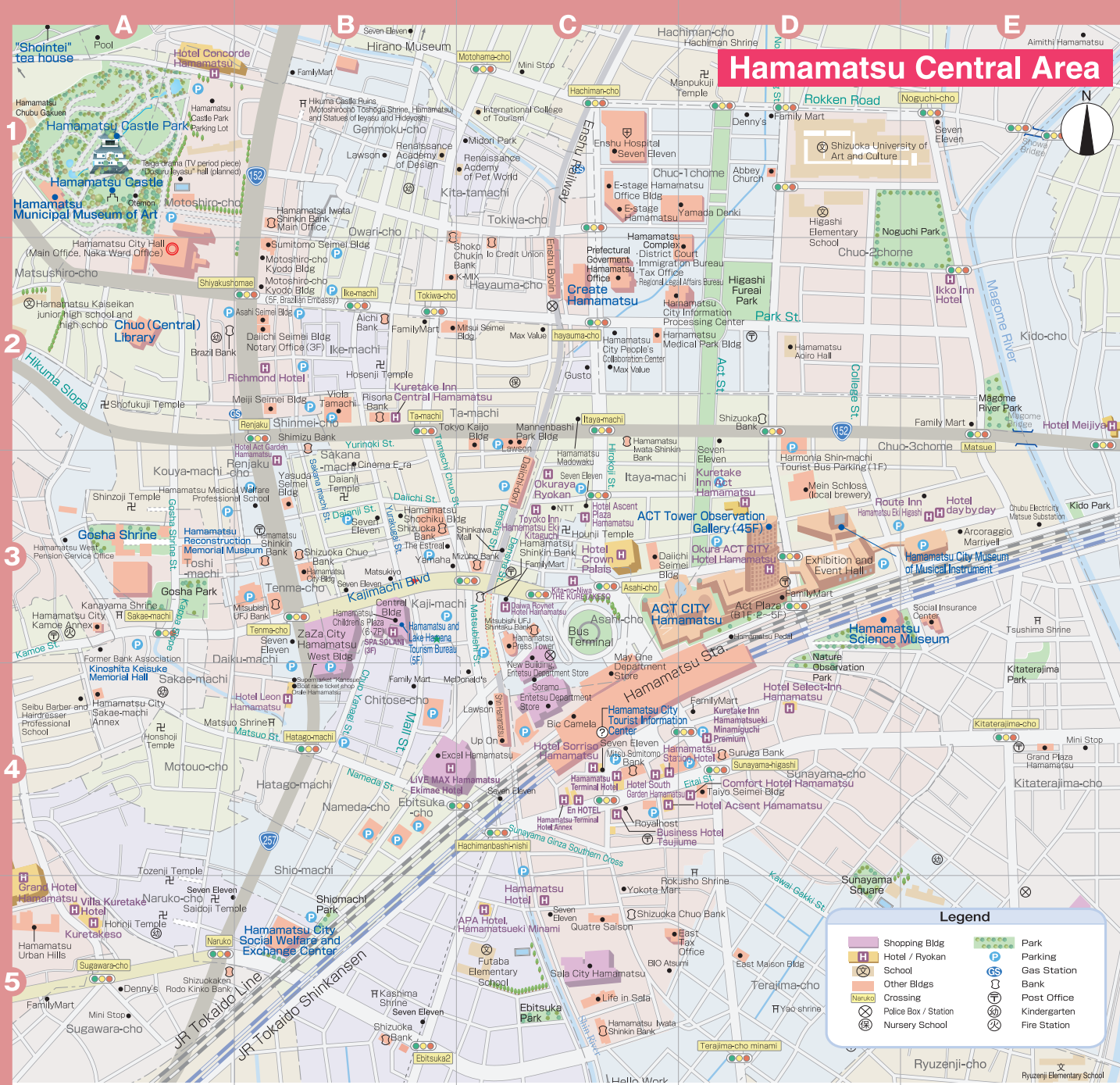
☎ 053-413-3369

👤 Adults: 300yen, jr. high and high school students: 200 yen, elementary school students: 100 yen, kids younger than elementary school students: Free *Children of elementary school age or younger may not enter the building alone.

📅 Wednesdays

🕒 10:00~20:00 (Last entry: 19:30)





Sightseeing Bus Parking Lot

Hamamatsu-city sightseeing bus public parking lot
Harmonia Shin-machi ☎053-413-2020

Daytime Rate (single entry) ¥1,000 (7:30 - 21:30)
Over Night Rate ¥3,100 (20:00 - 9:00 next day)



Taxi

Taxi Information Desk
(inside Hamamatsu Station)
☎053-453-0201



Bus

Entetsu Bus Terminal
☎053-455-2255

Hamamatsu/ Hamakita Area

—Outskirts of Hamamatsu, Hamakita—

The Enshu Coast, Nakatajima Sand Dunes, and some unique theme museums are located on the outskirts of Hamamatsu. Hamakita Area, which leads to central Hamamatsu by Enshu Railway, provides many tourist attractions including Shizuoka Prefectural Forest Park and Manyo no Mori Park.



Nakatajima Sand Dunes

MAP
09 B2

Nakatajima Sand Dunes is one of Japan's three major dunes. Here you can see a striped pattern in the sand, especially on windy winter mornings, formed by interaction between the wind and sand. You can also see the seawall stretching 17.5 kilometers from the mouth of the Tenryu River to the Imagire outlet of Lake Hamana.



☎ 053-452-1634

(Hamamatsu Tourist Information Center)

Hamamatsu Festival Pavilion

MAP
09 B2

Hi-Vision pictures, light, and sound give the feeling of participating in the Hamamatsu Festival. Massive 4m-long square kites and a Goten Yatai are exhibited, and a kite string manufacturing room is also open to the public.

☎ 053-441-6211

¥ Adults ¥400, free for jr. high school students and younger, disabled people, and those aged 70 and older

✕ Dec.29~31

🕒 9:00~16:30



Air Park Air Self-Defense Force Hamamatsu Public Relations Hall

MAP
09 A1

In this hall with the theme of "See, Touch and Experience", visitors can enjoy the F-1 supporting fighting planes, flight simulators, a domed theater, and more.

☎ 053-472-1121

¥ Free

✕ Mondays (if a national holiday, the following day), last Tuesday of each month, Tuesday to Thursday of second week of March and New Year's holidays (December 29 to January 3)

🕒 9:00~16:00



Auto Racing

MAP
09 A1

The Hamamatsu Circuit is one of five Auto Race circuits in Japan. The motorcycles used in Auto Race reach speeds of 150 km/h, making it the number-one public contest in Japan. Another interesting thing about Auto Race is that the fastest racers are handicapped by starting from the back. Then they have to overtake the other racers. The roaring of the engines and the excitement of the race cannot be missed. Please experience it in person.

☎ 053-471-0311



BUS [Nakatajima Sand Dunes-Hamamatsu Festival Pavilion] BT No.6 "Nakatajima Iki" ●15 min, get off at Nakatajima Sakyu; [Air Park] BT No.14 "Izumi, Takaoka Iki" ●25min, get off at Izumi 4-chome and walk ●10min.; [Hamamatsu Arena] BT No.9 "Iwata Eki, Mitsuke Iki" ●15min, get off at Hamamatsu Arena; [Hamamatsu City History Museum] BT No.2 "Shijimizuka, Sanarudai Iki" ●15 min, get off at Hakubutsukan and walk ●1min.; [Kamono Mabuchi Memorial Hall] BT No.5 "Ubumi, Yamazaki Iki" ●15min, get off at Shokokaigisho and walk ●5min.; [Saigagake Museum] BT No.15 "Kanzanji Onsen Iki" ●15min, get off at Saigagake
※BT=Hamamatsu Station Bus Terminal

Hamamatsu City History Museum

MAP
09 A1

The museum next to Shijimizuka Ruins (restored from settlement remains of the Jomon Period) displays a replica skeleton of a Naumann's elephant, models of primitive settlements, etc. The museum also features an introduction to the history of the primitive/ancient days of the whole region of Hamamatsu.



☎ 053-456-2208

¥ Adults ¥310, high school students ¥150, free for jr. high school students and younger, disabled people, and those aged 70 and older

✕ Mondays (if a national holiday, the following day), days following national holidays and New Year's holidays (December 29 to January 3)

🕒 9:00~17:00

Kamono Mabuchi Memorial Hall

MAP
09 A1

Kamono Mabuchi, born in this area, was a great Japanese classical scholar teaching Motoori Norinaga. This memorial was built in his hometown to introduce his works and performances.

☎ 053-456-8050

¥ Adults ¥300, high school students ¥150, free for jr. high school students and younger, disabled people, and those aged 70 and older

✕ Mondays (if a national holiday, the following day), days following national holidays and New Year's holidays (December 29 to January 3)

🕒 9:30~17:00



Kinoshita Keisuke Memorial Hall

MAP
09 A1

Born and raised in Hamamatsu, Kinoshita Keisuke is widely acknowledged as one of the movie directors who established the golden era of Japanese movies. Various memorabilia and material are exhibited to introduce his achievements and contribution in film making. The building was built by the design of an architect, Yoshihei Nakamura who was born and raised in Hamamatsu. Today it is registered as a tangible cultural property of Hamamatsu.



☎ 053-457-3450

¥ Adults ¥100 (free for high school students and younger, disabled people, and those aged 70 and older)

✕ Mondays (if a national holiday, the following day), days following national holidays and New Year's holidays (December 29 to January 3) 🕒 9:00~17:00

Shizuoka Prefectural Forest Park

MAP 11 A1

Some of the attractions include a 150m suspension bridge, called "Sora no Sanpomichi" (Pass in the sky), a visitor center, "Birdpia Hamakita", an accommodation and training facility, "Mori no Ie" (House in the forest), a camp site, and promenades.



☎ 053-583-0443
(Birdpia Hamakita)

Birdpia Hamakita

MAP 11 A1

A core part of the Shizuoka Prefectural Forest Park, this visitor center offers information on nature, specifically birds. Depending on the season, various activities such as bird watching, tree climbing and guided forest walks are also provided.



☎ 053-583-0443
 ☑ Free
 ☑ Wednesdays (Thursday if Wednesday is a national holiday), and Dec.29~Jan.3
 ☑ 9:00~16:30

Manyo no Mori Park

MAP 11 A3

This tranquil park is surrounded by 300 different types of plants from the Manyo cultural era. The museum in the park exhibits informational materials about these plants. Visitors can enjoy Manyo literature and Manyo culture.



☎ 053-586-8700
 ☑ Free
 ☑ Park - open throughout the year.
 Museum - Mondays (Tuesday instead if Monday is a national holiday), and New Year's holidays (Dec.29~Jan.3)
 ☑ 9:00~17:00

Hamakita Shinrin Athletic Park

MAP 11 A1

Visitors can enjoy miniature golf and go-cart racing as well as athletics authorized by the Japan Field Athletic Association N.179.



☎ 053-582-2211
 ☑ Adults ¥850, children ¥500
 ☑ No set holidays
 ☑ 9:00~18:00 (~17:00 in winter)

JA Topia Hamamatsu - Hamakita Plant Center

MAP 11 B3

The Hamakita area is famous for plant cultivation. This is the center where seedlings and garden plants are sold. A relaxing time can be spent shopping, dining in the restaurant or exploring the garden.



☎ 053-587-8728
 ☑ Free
 ☑ Jan.1
 ☑ 9:00~17:00



Train Taxi [Shizuoka Prefectural Forest Park / Birdpia Hamakita] Tenryu Hamanako Line Gansuji Station, Enshu Railway Gansuji Station ● 40min. walk [Manyo no Mori Park] Enshu Railway Hamakita Station ● 10min. by taxi [JA Topia Hamamatsu Hamakita Plant Center] Enshu Railway Kobayashi Station ● 10min. walk [Hamakita Hot Springs Aratama no Yu] Tenryu Hamanako Line Miyaguchi Station ● 30min. walk / 5min. by taxi

Hamakita Hot Springs "Aratama no Yu"

MAP 11 A1

This natural hot spring facility makes an ideal one day trip. The hot springs naturally contain sodium, carbonic acid, and other minerals, which are beneficial to overall health and beauty. Visitors can relax in an open-air bath and a bath fed directly by the hot spring. The facility also offers a restaurant and a foot bath area.



☎ 053-582-1126
 ☑ Adults (jr. high school students and older): 720 yen, elementary school students and seniors aged 70 and older: 360 yen, kids younger than elementary school students: Free
 ☑ 1st, 3rd Mondays and New Year's holidays
 ☑ 9:00~21:00 (reception closed at 20:00)

Omote Lake Hamana Area

—Kanzanji, Maisaka, Yuto—

Thanks to the fantastic abundance of nature around Lake Hamana and the Enshu Coast, this area is full of parks and leisure facilities. Flower parks, theme parks, marine sports areas, as well as three different hot springs can all be found in the Omote Lake Hamana Area.



Kanzanji Hot Springs

MAP 13 AB2

Kanzanji is famous nationwide as the biggest hot spring resort around Lake Hamana. The hot springs provide effective relief from muscular pain, poor blood circulation, and fatigue. The foot bath, Ukimido (summer house) observation deck, and Tateyama promenade are new popular spots at the hot springs.

☎ 053-487-0152

(Kanzanji Hot Spring Tourism Association)



Hamamatsu Flower Park

MAP 13 B2

This is the venue of the Hamamatsu International Mosaiculture 2009. This park has an abundance of beautiful seasonal flowers, such as cherry blossoms, roses, and irises. The main attractions including a large greenhouse with seasonal feature exhibits fountain shows performed every 30 minutes, a gift shop, a restaurant and a flower train provide great satisfaction for the family.

☎ 053-487-0511

¥ Adults free~¥1,000, Jr. high and elementary school students free~¥500 (changes seasonally)

🕒 9:00~16:30 (admission by 16:00)



Hamamatsu Zoological Gardens

MAP 13 B2

The city zoo faces Lake Hamana and has rich natural scenery. It has one of the largest exhibits of primates in Japan, including gorillas and orangutans. Other animals in its extensive exhibits include tigers, lions, polar bears, and giraffes. There is also a petting zoo area.

☎ 053-487-1122

¥ Adults ¥410, free for jr. high school students and younger, disabled people, and those aged 70 and older

📅 Dec.29~Dec.31

🕒 9:00~16:30 (admission by 4pm)



Hamanako Garden Park

MAP 02 A5

People of all ages can enjoy this park, appreciating seasonal plants and flowers, playing with water, and having fun in the playground. In addition, you can see a full view of Lake Hamana from the observation tower.

☎ 053-488-1500

¥ Free

🕒 8:30~17:00 (18:00 in July and August)



Beach and Marine Sports

Experience the thrill and excitement of speedboats and parasailing, as you become one with the wind and glide across the waters of Lake Hamana. We also recommend you try windsurfing and stand-up paddleboarding.

☎ 053-487-0152

(Kanzanji Hot Spring Tourism Association)



Kanzanji Ropeway

MAP 13 A12

The only ropeway that is located over lake in Japan, Kanzanji Ropeway connects Hamanako Pal Pal and Mount Okusa Observatory/Hamanako Music Box Museum. Take in the 360 degree panoramic view of Lake Hamana stretching below you.



Hamanako Music Box Museum



☎ 053-487-2121

🕒 Return trip: Adults: 840 yen, Children: 420 yen

📅 No set holidays

🕒 9:00 am to as required

Hamanako Pal Pal

MAP 13 A2

The amusement park offers new and exciting facilities, such as a roller coaster, water slides, athletic zone and Kids' Land. Families and couples can easily enjoy a full day here.

☎ 053-487-2121

🕒 Entry fee Adults: 1200 yen, elementary school students: 800 yen, young children (3 years old and over) and those aged 65 and older: 700 yen

📅 No set holidays

🕒 9:30~17:30 (depending on the season and day)



Hamanako Sightseeing Boat

MAP 13 AB2

Passengers can enjoy cruising Lake Hamana leisurely and comfortably. Seventy and thirty minute courses are offered.

☎ 053-487-0228

¥ Fare

[30-minute Kanzanji sightseeing course]

1200 yen for adults or 600 yen for children

[Seto route - One way]

1000 yen for adults or 500 yen for children

[Seto route - Both ways]

1800 yen for adults or 900 yen for children

📅 No set holidays

🕒 9:00~ (depending on the season and course)



🚶 Train JR Hamamatsu Station → Bentenjima Station ●13 min. → Taxi, etc. ●20 min.

🚌 Bus Hamamatsu Station BT No.1 "Kanzanji Onsen Iki" ●45 min. ※BT=Hamamatsu Station Bus Terminal

Takiya Fishing

MAP 14 A1

By using traditional Lake Hamana fishing methods, prawns, crabs and sea bream, revealed by the light attached to boat prows, are speared and caught. Fresh fish can be cooked and eaten right on the raft.

☎ 053-592-2260

(Takiya Association Yusen Dept.- reservations are necessary)

☎ Max. 4 people per boat

¥30,000 for fishing only

¥33,000 including cooking

☎ Mid May to September 30



The Nakamura House - Government-designated Important Cultural Asset

MAP 14 B2

The prestigious Nakamura Family put down their roots here in 1483 and then they served Lord Tokugawa Ieyasu from Shokichi, their 18th generation around 1688. The main house, designated as an important cultural asset by the government, was originally built in 1688, then restored in 2001~2003.

☎ 053-596-5585

☎ Adults: ¥200, high school students: ¥100, jr. high school students and younger: Free

☎ Dec.28~Jan.4

☎ 9:30~16:30 Open - Fridays, Saturdays, Sundays and national holidays only, (except Dec.28~Jan.4)



Hamanako Learning Center "ULOTTO"

MAP 15 B1

At this facility you can learn in detail about the ecology of Lake Hamana. It is a small aquarium with a large tank where you can see fish and other creatures that inhabit Lake Hamana, and even touch some of them in the touch pool, having a real "hands on experience with Lake Hamana".

☎ 053-592-2880

☎ Adults: ¥320, high school students and younger: Free

☎ Dec.28~Jan.4

☎ 9:30~16:30 Open - Fridays, Saturdays, Sundays and national holidays only, (except Dec.28~Jan.4)



Train JR Hamamatsu Station → Maisaka Station ●10min. → walk ●20min. / taxi ●10min.
JR Hamamatsu Station → Bentenjima Station ●15min. → walk ●30min. / taxi ●10min.
Bus Hamamatsu Station Bus Terminal No.5 "Ubuni Yamazaki Sen" ●40min.

The Tropical Ambience of Omote Lake Hamana

Bentenjima Hot Springs

MAP 15 A2

Bentenjima Beach Park in front of the Bentenjima Hot Spring resort is a popular leisure spot with a relaxed tropical feeling. Bustling with families enjoying swimming and fishing in the summer, this park offers spectacular views of the Bentenjima Kanko Symbol Tower and sunsets from the Hamana Ohashi Bridge.

☎ 053-592-4016

(Bentenjima Station Square Tourist Information Office)



Nagisaen

MAP 15 B1

This is a multipurpose sports facility where people can play tennis, baseball, and soccer, with a camp site located adjacently.

☎ 053-592-1525

☎ 12/29~1/3 and some temporary closures

☎ 8:30~20:00



Maisaka Post Station

MAP 15 B2

Tokaido Maisaka-shuku was the 30th stage on the Tokaido Road, once prosperous as ferry boat town for Imagire. This is a replica of the supplementary inn for Honjin (the main inn for feudal lords). This Wakihonjin is said to be the only remains of the Tokaido Road.

☎ 053-596-3715

☎ Free

☎ Mondays and the day after national holidays

☎ 9:00~16:00



Train JR Hamamatsu Station → Maisaka Station ●10min.
JR Hamamatsu Station → Bentenjima Station ●12min.

Oku Lake Hamana Area

—Hosoe, Inasa, Mikkabi—

The Oku Lake Hamana Area is called the "Backroom of Enshu", offering good tours of famous temples, shrines, gardens and flowers. Visitors can also enjoy beautiful scenic spots, ancient promenades, and many kinds of fruit and mushroom picking.



Kiga Checkpoint

MAP 16 B1

The Sekisho (checkpoint) along Himekaido (Princess Road) was established by Lord Tokugawa Ieyasu in 1601. The gate and the main building were restored in 1990. The existing part of the main building is designated as city government cultural asset.

- ☎ 053-523-2855
- ♂ Adults ¥150, free for high school students and younger, Age 70 and up (ID required)
- ✖ Open throughout the year (may be closed during New Year's holidays)
- 🕒 9:00~16:30



Hamamatsu City Regional Heritage Center

MAP 18 B1

This facility investigates, protects, and makes use of historical asset left in the region, including cultural assets in Hamamatsu City. There is a permanent exhibit that introduces the history of the Iinoya area with a focus on the Ii clan, including the projection mapping of the "Iinoya Warring States Era Picture Scroll". Exhibits are held for both tangible and intangible cultural assets of the Inner Lake Hamana area, along with workshops for children.

- ☎ 053-542-3660
- ♂ Free
- ✖ Mondays (if a national holiday, the following day) and Dec.29~Jan.3
- 🕒 9:00~17:00



- 🚆 Train Tenryu Hamanako Line Kakegawa Station→Kiga Station ●1hr. 30min.
- Tenryu Hamanako Line Shinjohara Station→Kiga Station ●40min.
- 🚌 Bus Hamamatsu Station Bus Terminal No.15 "Kiga, Mikkabi Iki" ●50min.

Shosan Horinji Temple

MAP 02 B4

This Chinese style temple, specific to the Obakushu Zen Sect, is a unique and valuable site. Kinmeiseki, "gold sound stone," makes a clear sound when struck and are well-known as a stone to improve financial fortune. This temple is one of the famous temples in the northern area of Lake Hamana.

- ☎ 053-542-1473
- ♂ Adults: ¥500; Elementary & jr. high school students: ¥200; Preschool and younger: Free
- ✖ New Year's holidays (some temporary closures)
- 🕒 10:00~16:00



Hamanako Bicycle Touring Track

MAP 13 15 16 19

This cycling path provides a place for everyone from kids to adults to freely enjoy cycling. There are 7 bike terminals along the track where bicycles can be rented. Have fun!

"Miwotsukushi Bridge", exclusively for cyclists use, is the symbol of this bicycle track and blends well with the nature of Oku Hamanako.

- ♂ To the back cover "Explore Hamamatsu and Lake Hamana on a rental bicycle"



Hamamatsu Fruit Park Tokinosumika

MAP 02 B4

This theme park has green houses for cultivation and exhibition, orchards and a restaurant. Depending on the season, visitors can try fruit harvesting and enjoy the large playground equipment, and also enjoy watching fountain shows.

- ☎ 053-428-5211
- ♂ Adults and high school students: ¥730; Elementary and jr. high school students: ¥360; Preschool and younger, Age 70 and up (living in Hamamatsu), and disabled people: Free *ID required
- ✖ Open throughout the year
- 🕒 9:00~18:00 (changes seasonally)



Flower viewing around Oku Hamanako

Shibukawa Tsutsuji (Azalea) Park

MAP 02 B3

The Shibukawa azalea blooms proudly around the middle of each May at the Shibukawa Azalea Cluster, a prefecture-designated Natural Monument consisting of azaleas foremost. Uniquely, the trees, reaching 5-6 meters, have brilliant red-purple flowers and leaves in sets of three. Consider it a hike.

- ☎ 053-522-4720
- (Okuhamanako Tourism Association)



Hana no Okuyama Kogen

MAP 02 A4

At this botanical garden, you can enjoy seasonal flowers including weeping plums, hydrangeas, Japanese lilies, and the seven autumn flowers.

- ☎ 053-543-0234
- ♂ Adults ¥500, jr. high and elementary school students ¥300 (usually changes seasonally), dogs ¥300
- ✖ Tuesdays, off-season closures, inquiry necessary
- 🕒 10:00~17:00 (changes seasonally)



Ryugashido Caves

MAP 18 A1

Ryugashido, the largest cavern in the Tokai District, is the mysterious underground creation of 250 million years of history. The total length of the cave is 1,000m, approximately 400m of which is open to the public. Come and see the natural spectacle and enjoy the mystery of the underground!



☎ 053-543-0108

👤 Adults ¥1,000, jr. high school students ¥600, elementary school students ¥600

🕒 9:00~17:00

Ryotanji Temple

MAP 18 B2

This temple was founded in the year 733 by Gyoki, Bodhisattva. There are many cultural assets here, such as the garden designed by Enshu Kobori, and the sculpture of a dragon carved by Jingoro Hidari. Setting for the television series Onna Joshi Naotora and bodaiji that enshrines 40 generations of the Ii family, including Chief Minister Naosuke Ii, who lived at the end of the Edo period (bakumatsu period). One of five temples north of the lake designated as a nationally important cultural property.



☎ 053-542-0480

👤 Adults ¥500, elementary and jr. high school students ¥200

🕒 Aug.15, Dec.22~27 🕒 9:00~16:30

Daihonzan Hokoji Temple and Okuyama Hansobo

MAP 02 A4

Daihonzan Hokoji Temple is the headquarters of the Hokoji Temple group of the Buddhist Rinza Sect. Five hundred stone statues, named Gohyaku Rakan, warmly welcome the visitors to the precinct surrounded by old Japanese cedar trees. Hokoji is one of the 5 famous temples in the northern area of Lake Hamana.



☎ 053-543-0003

👤 Adults ¥500, elementary and jr. high school students ¥200

🕒 9:00~16:00



🚆 Train Tenryu Hamanako Line Shinjohara Station→Kanasashi Station ●50min.

🚌 Bus Hamamatsu Station Bus Terminal No.15 [Okuyama Line]

→ "Inoya" ●45min.

Makayaji Temple

MAP 02 A4

The early Kamakura period garden uses Heian-era forms uncommon in eastern Japan. Some beautiful highlights include the marking off of ponds with land, the hill composition, the stone groupings. Other must-sees include the nationally designated Important Cultural Property of thousand-arm Guanyin (Kannon) statue, Acala (Fudo Myo-o) statue, and standing Acala.



☎ 053-525-0027

👤 Adults: 400 yen, high school students: 300 yen, jr. high school students: 200 yen, elementary school students and younger: Free

🕒 Aug.10 Note: Subject to unscheduled closed days 🕒 9:00~16:30

Daifukuji Temple

MAP 02 A4

See the Nio-guarded gate, the circuit-style garden which uses the rear mountain incline to spread a pond all over, and the Hanzo cherry trees, which bloom from October to February. A famous food made here is Daifuku-ji natto, said to have been served to feudal lords such as Imagawa, Toyotomi, and Tokugawa. One of the famous temples that make up Kohoku Gozan.



☎ 053-525-0278

👤 Adults (Treasure Hall and Garden: 500 yen, Garden only: 100 yen)

🕒 9:30~16:30

Hantoshi cherry trees (blooming - Oct.~Mar.)

Large ginkgo tree

Hamanako Paraglider School

MAP 02 A4

Try a flight with an instructor, setting off from a point at an altitude of 300 meters, with an incredible view of Lake Hamana.



☎ 053-526-0015

👤 Trial flight: 11,000 yen (tax included),

weight limit 40 to 75 kg, reservation required

🕒 Thursdays (open on national holidays, golden week, and obon holidays)

🕒 Reception 9:00~18:00

Mikkabi Hot Springs

MAP 02 A4

You can enjoy a panoramic view of Lake Hamana from Mikkabi Hot Springs' which are fed by simple alkali springs. Oku Hamanako Hot springs supplied by salty earth-tone springs can also be enjoyed.

☎ 053-522-4720 (Okuhamanako Tourism Association)



🚆 Train Tenryu Hamanako Line Shinjohara Station→Mikkabi Station ●25min.

🚌 Bus Hamamatsu Station Bus Terminal No.15 "Mikkabi Iki" ●70min.

Hokuen Area

—Tenryu, Haruno, Tatsuyama, Sakuma, Misakubo—

This beautiful area, 90% of which is surrounded by forests, is abundant in greenery and home to lakes and rivers. Through the center runs the mighty Tenryu River. The area displays history and traditional culture as influenced by these surroundings. A wide variety of outdoor leisure can be enjoyed here in the magnificent natural settings.

Tenryu Futamata Station, Tenryu Hamanako Line MAP 21 B3

This wooden station, built in 1940, is a registered national Tangible Cultural Property. Inside can be found now-rare turntables and a fan-shaped garage (registered national Tangible Cultural Property), creating a nostalgic atmosphere.

☎ 053-925-2276
 ☒ 9:00~17:00 (open year-round)



Futamata Castle Ruins MAP 21 A2

Futamata Castle was used as a fortress during the battle between Tokugawa and Takeda. This is also known as the tragic place where Lord Tokugawa Ieyasu's oldest son, Lord Nobuyasu, was forced by his father to commit hara-kiri or seppuku (ritual suicide) in order to obey Lord Oda Nobunaga's command.

☎ 053-925-5845
 (Tenryu Tourism Association)



Hamamatsu City Akino Fuku Art Museum MAP 21 B2

Here the works of the late Japanese-style painter, Fuku Akino from Tenryu, are exhibited. The first floor is the permanent exhibit room, while the second floor is used for special exhibits and a public gallery. It is also worth going to see the building itself, designed by Terunobu Fujimori, for its use of natural materials such as Tenryu cedar wood and plaster.

☎ 053-922-0315
 ☑ Adults ¥310, high school students ¥150
 ☒ Mondays (Tuesday instead if Monday is a national holiday), days for exhibit change, and New Year's holidays
 ☒ 9:30~17:00



Tenryu Boat Race Area and Kohan House MAP 02 C3

This is one of the few boating areas in Japan which has a 2,000m race course. The Hamamatsu City Tenryu Nature Learning Center, named "Kohan House", adjacent to this boat area, is one of the athletes' home lodgings.

☎ 053-923-0433 (Tenryu Yusen / Tenryu Rowing Course)
 053-923-0319 (Kohan House)



Train [Futamata Castle Ruins-Akino Fuku Art Museum] Tenryu Hamanako Line, get off at Tenryu Futamata Station~walk ●20~30min. / Enshu Railway Nishikajima Line Shin Hamamatsu Station~Nishikajima Station ●32min. ~Tenryu Hamanako Line, get off at Tenryu Futamata Station ●5min. ~walk ●20~30min.

Bus [Futamata Castle Ruins-Akino Fuku Art Museum] Entetsu Bus "FutamataYamahigashi Iki", Akiha Line, get off at Akino Fuku Art Museum Entrance●walk ~10 20min.

Kunma Suisha Village Rest Station MAP 02 B3 Tenryu Sozu Hanamomo Village Rest Station MAP 02 C3 Ippukudokoro Yokokawa Rest Station MAP 03 C3

In the Tenryu area, there are 3 rest stations. Here you can taste a variety of simple and traditional local products which can no longer be found in the city. At Kunma Suisha Village in Kunma, an area that thrived as a post town on the Akiba Horajiri Temple Road, you can enjoy eating handmade soba (buckwheat noodles) and goheimochi (skewered sweet rice cakes served with soy sauce and miso). At Tenryu Sozu Hanamomo Village, you can enjoy handmade Hanamomo curry and soba, as well as local delicacies. Also try the canoe experience on the dam lake right out front.

☎ 053-929-0636 (Kunma Suisha Village)
 053-923-2339 (Tenryu Sozu Hanamomo Village)
 053-924-0129 (Ippukudokoro Yokokawa)



Ooguriyasu no Tanada (terraced rice paddies) MAP 02 B3

There are nearly 500 sections of beautifully laid paddy fields, which offer a refreshing and scenic view in every season.

☎ 053-925-5845
 (Tenryu Tourism Association)



Akihasan Hongu Akiha Shrine

MAP 22 A1

This shrine has been well known since old days as the home of the God of fire protection. Many people visit here every year during the Fire Festival held in December. From the nearby entrance, where a Torii stands, you can see downtown Hamamatsu, the Enshu Coast as well as the mountains of Mikawa and the Tenryu River.

☎ 053-985-0111



Shirai Tetsuzo Memorial Hall

MAP 22 B1

This is the memorial museum for Mr. Tetsuzo Shirai, a famous director and choreographer as Takarazuka Opera Company's supporter. In the memorial, about 600 pieces of Takarazuka-related materials and some of his favorite personal items are exhibited.

☎ 053-989-0200 (Haruno Cultural Center)

¥ Free

✕ Mondays (Tuesday instead if Monday is a national holiday), and New Year's holidays

🕒 9:00~17:00



Shirai Tetsuzo Memorial Hall,

Daitengu Mask

Haruno Cedar

MAP 03 D3

On the top of Mt. Haruno stands the Daikoji Temple. In the precinct of this temple you can see a large cedar tree, a prefectural government designated natural treasure. The tree is 1,300 years old and 43 meters tall.



ATV Sports Land Haruno

MAP 22 B1

People can ride ATV (all-terrain vehicles) in beautiful natural surroundings.



☎ 053-985-1616

¥ Hourly Rate - Adults (aged 11 and older) ¥3,000 for 45 min., children (aged 6~10) ¥1,500 for 30 min.

🕒 9:00~17:00, open on Saturdays, Sundays and national holidays only



🚆 Train 🚌 Bus [Big Mask of Tengu・Shirai Tetsuzo Memorial] Enshu Railway Nishikajima Line Shin Hamamatsu Station→Nishikajima Station ●32min.→transfer to the Entetsu Bus "Akiba Line"→get off at Haruno Community Collaboration Center bus stop ●57min.→walk ●15min.

Sakuma Electricity Hall

MAP 23 A1

This themed museum educates the public about the history, mechanism and role of hydro-electric generation at the Sakuma Dam which uses the Tenryu River.

☎ 053-965-1350

¥ Free

✕ Mondays (Tuesday instead if Monday is a national holiday), Dec. 28~Jan. 3

🕒 9:00~16:30



Sakuma Dam

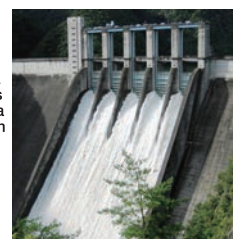
MAP 23 A1

This dam was built in just 3 years and 4 months in the 1950s, to make up for electric power shortages brought on by the period of rapid economic growth, and it became the largest dam in Japan at the time. Lake Sakuma has magnificent scenery, as a reservoir created by damming the Tenryu River. It has been designated as part of Tenryu-Okumikawa Quasi-National Park, and as one of the top 100 dam lakes in Japan.

☎ 053-965-1350

✕ Sakuma Electricity Hall: Mondays (if a national holiday, the following day), Dec. 28~Jan. 3

🕒 9:00~16:30



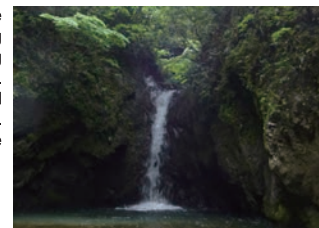
Ryuou Gongen and Hataoribuchi

MAP 23 B1

Ryuou (dragon king) Gongen is a place surrounded by a 100 meter towering sheer cliff, with its waterfall running down into the deep jade basin. Hataoribuchi also has a two-staged waterfall flowing a total of 30 m overall. You can enjoy strolling around the place on the walking path.

☎ 053-925-5845

(Tenryu Tourism Association)



🚆 Train [Sakuma Electricity Hall] JR Hamamatsu Station→Toyohashi Station→Iida Line~ get off at Chubu Tenryu Station ●150min.→by car ●30min.

Tatsuyama Bath Facility "Yasuragi no Yu"

MAP 24 B2

Yasuragi no Yu is located beside the Akiha Dam reservoir. The view of the Tenryu River from the baths is gorgeous and peaceful. People can stop by to relax on the way back from Akiha Shrine which is only a 25 minute drive.



☎ 053-969-0082

- ♂ Adults: 830 yen (half off for elementary school students)
- *Adult residents of Hamamatsu: 200 yen, children: 100 yen
- ♂ Mondays and Tuesdays (Open on national holidays)
- ♂ 10:30~16:30 (20:00 on Fridays, Saturdays and Sundays)

Shirakura Gorge

MAP 24 A2

The center of this 10 km long valley along the Shirakura River is an outstanding autumn color viewing spot in the Enshu area. Red maple trees surround the views of waterfalls and various sizes of unusual stones.



At the Misugi Farm, various local products are sold, including herbs from the surrounding fields and mountains, green tea, Japanese mushrooms, home-made Konnyaku, blueberry jam, wooden products and fresh vegetables.

☎ 053-925-5845 (Tenryu Tourism Association)

Akiha Dam Senbon Sakura

MAP 24 A2

On the lakeside of Akiha Dam, a 10km strip along the eastern bank of the Tenryu River is known as "Senbon Sakura" for its beautiful blossoms. Every year, from late March to early April, cherry blossoms are in full bloom and our "Sakura Festival" is held.



☎ 053-925-5845 (Tenryu Tourism Center)



[Yasuragi no Yu] Enshu Railway Nishikajima Line Shin Hamamatsu Station → Nishikajima Station ●32min. → transfer to the Entetsu Bus "Hokuen Honsen" → get off at Saigawa ●41min. → walk ●5min.

Yamazumi Shrine

MAP 25 B2

This shrine, situated at an elevation of 1107 m at the Yamazumi pass, is known for veneration of a dog deity. According to legend, in 1572, as Lord Tokugawa Ieyasu fought fiercely in the Battle of Mikatagahara, dogs howled all at once to scatter the enemy and protect Lord Ieyasu. Japanese cedar over 1300 years old grows in the shrine garden, where from early summer the cries of the Japanese Scops Owl can be heard.



☎ 053-987-1179

Takane Castle

MAP 25 A2

This castle was built around the mountain top of so called Sankakuyama at an elevation of 420 m at the far northern end of the Enshu district. The castle was largely restored by Lord Takeda Shingen and his son Lord Katsuyori and was used as a stronghold for border guards, overlooking the main roads.

The gate with a watch tower was also restored to such an extent that visitors really get the feeling of being in a mountain castle from the age of wars.



☎ 053-925-5845 (Tenryu Tourism Association)

Togenokunitori Tug of War

MAP 03 D1

The old Akiha Road was used for pilgrimages to Akiha Shrine, to transport salt to Shinshu and as a strategic military path for large-scale attacks by Shingen Takeda. The Togenokunitori Tug of War consists of two teams of 10, signifying the Enshu (Hamamatsu, Shizuoka) and Shinshu (Iida, Nagano) armies, competing 3 times on the prefectural border whereby the winning side takes 1 meter of territory from the losing side.



☎ 053-987-0432
(Togenokunitori Tug of War Executive Committee)



[Misakubo Serow and Forest Interactive Museum] JR Hamamatsu Station → Toyohashi station → Iida Line ~get off at Misakubo Station ●150min. ~by car ●40min.

KOSAI GUIDE MAP

Kosai City
Guide Map

Kosai City has the
ocean, mountains, and
lakes, with many places
to see and to play!



Kosai Area

Kosai City is located at the westernmost edge of Shizuoka Prefecture, on the border with Aichi Prefecture. It is surrounded by the lush greenery of the Kosai Mountains and Lake Hamana, so the area is rich in nature. It has retained its old townscape and has many highlights to see, such as the Arai Barrier, the only surviving security checkpoint remaining from the era of the Tokugawa Shogunate.



Arai Barrier (National Historic Site)

MAP 27 C4

In order to protect Edo, the Tokugawa Shogunate set up 53 security checkpoints across the country, and strictly kept feudal lords from "letting in guns and letting out women" from the capital. The current security checkpoint is the only one remaining in Japan that was erected by 1858.



☎ 053-594-3615

¥ Adults: 400 yen, children: 150 yen

✕ Mondays (Open if a national holiday),
Dec. 26 - Jan. 2

🕒 9:00~16:30

Hatago Kinokuniya Museum (Municipal Cultural Asset)

MAP 27 C4

This hatago (traveler's lodge) has been renovated and opened to the public as a museum that conveys the culture of Arai-shuku Station on the Tokaido road. Its courtyard features a suikinkutsu (a buried earthen jar that makes pleasant sounds when water drips into it).



☎ 053-594-3615

Direct inquiries to the Arai Barrier

¥ Adults: 210 yen, children: 100 yen

✕ Mondays (Open if a national holiday),
Dec. 26 - Jan. 2

🕒 9:00~16:30

Komatsuro Community Development & Exchange Center (National Cultural Asset)

MAP 27 C4

This old building, which operated as a geisha house and a small restaurant in the first half of the 20th century, has been renovated and opened to the public. The first floor has a gallery and a rest area, while the second floor has an exhibit of everyday tools used in the past.



☎ 053-594-0540

¥ Free

✕ Mondays, Dec. 29 - Jan. 3

🕒 9:00~17:00

Honkoji Temple (National Cultural Asset)

MAP 27 C3

This temple is famed for inspiring the prominent tanka poet Kitahara Hakushu in the early 20th century. The main hall has been designated as important national cultural asset. It has a collection of many cultural assets as well. In the spring, cherry trees bloom brilliantly on the grounds of the temple.



☎ 053-576-0054

¥ Adults: 300 yen, children: 150 yen

🕒 9:00~17:00

Onyado Shirasuka

MAP 26 B4

This is an exhibit facility for the history and culture of Shirasuka-shuku Station on the Tokaido road.

It also an ideal resting place when walking about the area.



☎ 053-579-1777

¥ Free

✕ Mondays (If a national holiday, the following day), Dec. 29 - Jan. 3

🕒 10:00~16:00

Kosai Mountains Hiking Course

MAP 26 A1・A2

Along with Lake Hamana, the Kosai Mountains are practically synonymous with Kosai City itself, and have become a popular point for many people visiting from afar. Located on the border with Shizuoka Prefecture, the Ochiwatoge temple ruins offer the best viewpoint overlooking Lake Hamana and the Enshu Sea.



Roadside Station Shiomizaka

MAP 26 A4

Standing on the observation deck, you can feel the roundness of the Earth just looking at the panoramic view of the Enshu Sea far below. There is also a footbath using solar heat, available to visitors free of charge.

☎ 053-579-3600

✕ No set holidays

🎁 Gift shop: 8:00~19:00

Restaurants: 8:30~19:00 (18:00 in Oct. to Apr.)

Foot Bath: 10:00~16:00 (Nov. to Apr.)

10:00~17:00 (May to Oct.)



Imagire Experience Village "Kaikokan"

MAP 27 D4

Lake Hamana Imagire Experience Village is located just west of the Imagire outlet, where Lake Hamana connects to the Pacific Ocean. In addition to a sea fishing park, where people gather to go fishing year round, there is also Kaikokan, where you can enjoy hands-on learning experiences related to the sea.

☎ 053-594-6624

¥ Free (Experiences classes at actual cost)

✕ Mondays (If a national holiday, the following day),
New Year's holidays *No closures during summer
(Mid Jul. to end of Aug.)

🕒 9:00~17:00 Summer: 9:00~18:00



Boat Race Hamanako

MAP 27 D3

Come experience the power and spectacle of five boat races, with a refreshing breeze, splashing water, and six color coded boats racing over the water. It also features the new Boat Kids Park Mooovi Hamanako, produced by Bornelund Inc., so you can enjoy it with your whole family. Check the website for details including race dates, Mooovi business days, and fees!

☎ 053-594-7111



QR code for smart phones QR code for feature phones



Industrial Tourism in Hamamatsu and Lake Hamana

Note If you would like to take a plant tour at a company facility, you may need a reservation. Please call to confirm the schedule before visiting.

SUZUKI PLAZA

MAP 09 A2

Various products and other relevant materials collected since Suzuki's foundation are exhibited at the museum. Visitors can learn about the current automobile production processes and Suzuki's passionate craftsmanship based on their concept of continually offering top-quality products to their customers.

TEL.053-440-2020

- Tour hours : 9:00~16:30 (reservations are necessary)
- Closed : Mondays, New Year's holidays, and summer holidays etc.



Yamaha Corporation - Innovation Road Museum

MAP 09 B1

Yamaha continues to generate innovative technologies and products based on technologies and sensitivity cultivated with respect to sound and music. Established in Hamamatsu City in 2018, this museum gives visitors a chance to experience the challenges face by Yamaha along their 130 year journey since Yamaha was founded and learn about Yamaha today and their plans for the future. Exhibits include organs and pianos built by founder Torakusu Yamaha and many other valuable items.

TEL.053-460-2010

- Hours: 9:30~17:00 (appointment required)
- Closed: Sundays, Mondays, and holidays (such as end/beginning-of-year, summer, Golden Week, and other company holidays, maintenance days, etc.)



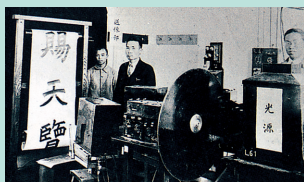
Honda Motor Co., Ltd. Manufacturing site of transmissions

MAP 09 A1

The birthplace of Honda Motors and the current manufacturing site of transmissions, visitors can tour manufacturing processes and purchase commemorative goods.

TEL.053-439-2011 (By reservation)

- Viewing hours: 9:00~11:00, 13:30~15:30
- Viewing days: Monday - Friday (please inquire first)
- When to reserve: Send tour requests via the Internet between 0:00 on the first day and 24:00 on the tenth day of the month, three months prior to the desired tour date.



Shizuoka University Takayanagi Memorial Hall

MAP 09 A1

The history of Mr.Kenjiro Takayanagi, called "the father of television", is outlined in this memorial. Mr.Takayanagi succeeded in projecting the letter "I" in Japanese onto a screen using the electric signal of a cathode-ray tube image system. Valuable photos and exhibits can also be seen here.

TEL.053-478-1402

- Tour hours - 10:00~16:00 (Closed: 12:30~13:30)
- Holidays / Saturdays, Sundays, national holidays, New Year's holidays and temporary closures



Soichiro Honda Craftmanship Center

MAP 21 B2

This facility introduces the character and artisanal spirit of Soichiro Honda (1906-1991), founder of Honda Motor Co., Ltd., from the former Tenryu City. Items on display include engines and motorcycles that Mr. Honda developed.

TEL.053-477-4664

- Hours - 10:00~16:30
- Closed: Monday and Tuesday (or Wednesday if Monday or Tuesday is a national holiday) and before/after New Years
- Admission: Free (except for special exhibits, etc.)



Meijiya Soy Sauce

MAP 11 A4

This natural soy sauce is made using painstaking and time-consuming traditional methods of creating the koji starter and slowly fermenting it to perfection. This careful slow fermentation through all four seasons produces slightly more concentrated sauce with complex flavor. In addition to touring the factory, visitors can also try operating the soy sauce press or making miso.

TEL.053-586-2053

- Tour times: Confirm by telephone (tours take 30 minutes or more)
- Holidays: Sundays and national holidays



Toyoda Sakichi Memorial House (Municipal Cultural Asset)

MAP 27 B3

Toyoda Sakichi Memorial House was opened in October 1988, commemorating the 120th anniversary of the birth of Toyoda Sakichi, founder of the Toyota Group.

TEL.053-576-0064

- Tour hours: 9:30 ~ 17:00 (Apr. 1 to Sep. 30)
9:30 ~ 16:30 (Oct. 1 ~ Mar. 31)
- Holidays: Wednesdays (if a national holiday, the following day), Dec. 26 to 31, Jan. 6 to 8, Monday and Tuesday immediately before the last Wednesday of February, Monday and Tuesday immediately before the first Wednesday of September
- Address: 113-2 Yamaguchi, Kosai-city



Shizuoka Rofu Company

MAP 02 A5

The Shizuoka Rofu company is proud of its environmentally friendly "Hamanako Towel" made using their special textile technique, called "Enshu Karami Chijireori" (patent acquired). These towels, made from Japanese paper, do not dissolve when wet and have become popular nationwide. Exhibitions and sales are available at any time, and plant tours are also available by phone reservation.

TEL.053-489-2331

- Tour hours - 9:00~17:00 (appointment required)
- Tour days - Please call to confirm beforehand.



Hana no Mai Sake Brewery

MAP 11 A2

Visitors can observe the sake brewing processes performed in the traditional method, using local rice and water.

TEL.053-582-2121

- Visiting period / November to June
- Visiting time/ 60 to 90 minutes (appointment required)
- Holiday period / Beginning of the New Year



Unagi Pie Factory

MAP 09 A1

(Unagi Pie Main Store Ookubo Factory)

The Unagi Pie production processes can be observed at this facility which includes a shop and cafe where people can try Shunkado's well-known cakes. Unagi Pie was created with the hope that families will get together to enjoy Unagi Pie in the evening.

TEL.053-482-1765

- Visiting hours / 10:00 ~ 17:30 (18:00 in July and August)
- Duration / approx. 40 min.
- Open throughout the year



nicoe

MAP 11 B4

Famous for its "Unagi Pie" confections, Shunkado was established based on the concept of a "Hamakita sweets community conveying a new confectionery culture and style to the world." In addition to shops specializing in pies and Japanese confections that cannot be found anywhere else, there are buffet restaurants, areas for fun and learning, among other facilities for the whole family to enjoy.

TEL.053-586-4567

- Tour hours / 10:00~18:00 (*Varies by shop)
- Place / 6-7-11 Somejida, Hamakita-ku, Hamamatsu-city
- No entry fee
- Holidays / Mondays and Tuesdays

Let's use
good manners
when taking tours!

1. When asked not to take photos in the factories
2. If those who have consumed alcohol, or those from
3. If a visitor's clothes or shoes are deemed unsuit-
4. Smoking is prohibited in most plants and facilities.
5. Tours are usually conducted in Japanese. If you
6. If you cannot make it to a scheduled tour, please

and facilities, please refrain from doing so. a similar industry, are asked not to take the tour, please respect their request. able for the tour, you may not participate. Please smoke in the designated smoking areas. need an interpreter, please call to confirm at each plant or facility in advance. call and cancel as soon as possible.

The Tastes of Hamamatsu and Lake Hamana



Thanks to the bountiful natural surroundings, Hamamatsu is full of delicious foods. Why not try some of the Hamamatsu specialties: sea food from the Enshu Sea and Lake Hamana, goods from the mountainous areas of the north, and various traditional products, a result of the mild climate and Mother Nature.



Hamamatsu's Power Foods

The Hamamatsu and Lake Hamana area are blessed with a warm climate and abundant nature, with approximately 170 agricultural products grown and 150 marine products caught. Hamamatsu Power Foods are defined as the seasonal ingredients produced in Hamamatsu and cuisine made with those ingredients, which supported the rapid progress of Tokugawa Ieyasu who spent 17 years in the Hamamatsu area, and continue to support Hamamatsu residents who have the longest healthy life expectancy in Japan.

URL <https://hamamatsu-pf.jp>



Mikkabi / Topia Mandarin Oranges

Hamamatsu's tangerines are famous all over Japan. The warm climate and plentiful sunlight of the hill slopes bordering Lake Hamana put them among the few places suited to grow these tangerines. Their high sugar content and juiciness sets them apart.

☎ 053-525-1016 (JA Mikkabi)
☎ 053-476-3111 (JA Topia Hamamatsu)



Hamamatsu Gyoza

Hamamatsu is now said to be the No. 1 Gyoza consuming city in Japan. Many Gyoza take-out shops which add boiled bean sprouts to the Gyoza dish are to be found here.

☎ 053-465-5373
(Hamamatsu Gyoza Association)



Hamanako Unagi (Eel)

Hamamatsu's specialty is eel and Lake Hamana-produced eel is well known all over Japan.

TEL.053-592-0123
(Lake Hamana Fish Culture Fishermen's Cooperative)



Enshu Nada Natural Blowfish

The offshore Enshu Sea has recently become a leading natural blowfish fishing ground nationwide. These days, the local people here can also enjoy blowfish.

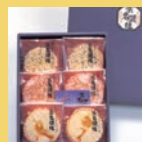
TEL. 053-487-0152
(Kanzanji Hot Springs Tourism Association)

Locally Brewed Sake

Many awards have been won by local sake brands, including "Hana-no-Mai" and "Shussejo", which are carefully brewed with ground water from the Akaishi Mountains and the Tenryu River.

TEL. 053-582-2121 (Hananomai Brewing)
053-540-2082 (Hamamatsu Shuzo)

Why not
bring home
Hamamatsu's
specialty
cakes
as a gift?



Hamanako Yaki
TEL.053-442-1200
(Kawamori Shokuhin)



Chattera
TEL.053-462-0002
(Hamamatsu Bunmeido)



Sayuri
TEL.053-441-0550
(Gu Kogiku)

Eel, Blowfish, and Hamo!

Try Lake Hamana's 3 Big Specialty Foods



Enshu Nada Natural Hamo (Sharp Toothed Eel)

Hamo is highly valued as a quality fish in the Kansai district, specifically in Kyoto. Recently, Hamo has been caught nearby in the Enshu Sea and the people here are also developing a taste for it.

TEL.053-487-0152
(Kanzanji Hot Springs Tourism Association)



Doman Crab

TEL.053-592-2911
(Hamana Fishermen's Cooperative)



Oysters

TEL.053-596-9255
(Kosai-Arai Tourism Association)



Suppon (soft-shelled turtles)
TEL.053-592-0020
(Hattori Nakamura Suppon Farm)



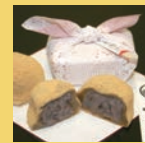
Lake Hamana Prawns
TEL.053-592-2911
(Hamana Fishermen's Cooperative)



Teyaki Shusse "Oodako Sen"
TEL.053-471-7758
(Kirakudo Honpo)



Agetshio
TEL.053-441-9456
(Marutaya Cake Shop)



Red Bean Rice Cake
TEL.053-540-2082
(Confectionary Shop Aoi)



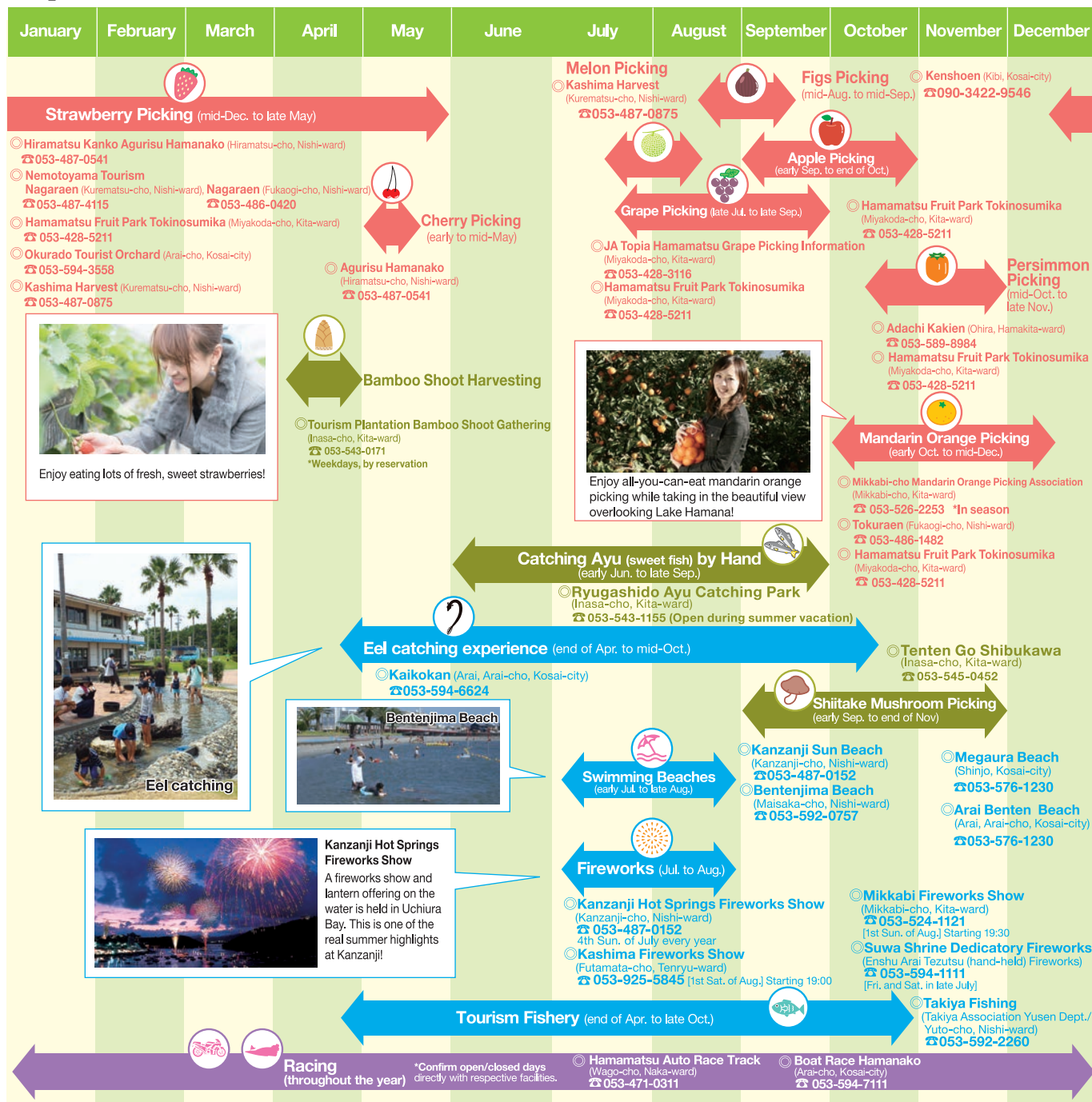
Nunohashi no Yuki
TEL.053-447-0181
(Tamachi Baigetsu)

Further information
on gifts

Hamamatsu City Souvenir Association

〒432-8034 156-3, Shiomachi, Naka-ward, Hamamatsu city TEL.053-458-3635

Experience Calendar of Hamamatsu and Lake Hamana



Festival Calender of Hamamatsu and Lake Hamana



Fireworks dedicated to Suwa Shrine
(Municipal Intangible Folk Culture Asset)

This traditional event has continued for over 350 years since the Jyokyo era (1684 ~ 1688) in the Edo period (1603 ~ 1688), and is held on a Friday and Saturday in late July every year. Approximately 2,000 handheld fireworks are launched over two nights, filling the old post town with a festive atmosphere. Local residents do every step of preparation from manufacturing the fireworks to filling them with gunpowder.

Shoryu Weeping Plum

(Japanese Apricot) Festival

About 80 Weeping Plum trees (around 50 years old) are pruned to look like dragons climbing to the heavens. There are also 200 young trees in full bloom during the season and a seven stage waterfall in the garden.



Princess Road Festival

These Edo-era reenactments of the procession are performed beneath the cherry blossoms along the Miyakoda River. This gorgeous performance, involving more than 100 people including a princess, waiting maids, and followers, will bring you right back to that era.



Hamamatsu Festival

The famous kite battles, the spectacular Goten Yatai float parade, and various other events are held during the Hamamatsu Festival. The whole city comes to life, as everyone enjoys the festive atmosphere. Held on May 3rd to 5th.



Enshu Dainenbutsu

(chanting prayers and dancing to the Buddha)
These dance and prayer chants using flutes and drums are among the Enshu district's unique local arts. The Enshu Dainenbutsu is a designated cultural asset.

January

Terano Hiyondori

[Jan.3] Inasa-cho,
Kita-ward: Terano, Hozoji Temple, Kannondo

Kawana Hiyondori

[Jan.4] Inasa-cho,
Kita-ward: Fukumanji Temple Yakushido



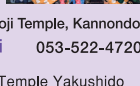
February

Nishiure no Dengaku

[Feb. or Mar.] Misakubo-cho,
Tenryu-ward: Okuryokeshono

Shoryu Shidare Plum Festival

[early Feb. ~ end of Mar.]
Inasa-cho, Kita-ward: Okuyama Highlands
Kurematsu-cho, Nishi-ward: Mt. Okusa
Shoryu Shidare Plum Orchid



March

Inasa Cherry Blossom Festival

[late Mar. ~ late Apr.] 053-522-4720
Inasa-cho, Kita-ward:
Okuyama Kogen and surrounding area

Hamakita Plant Festival

[early Mar.] 053-587-8728
Shinbara, Hamakita-ward:
JA Topia Hamamatsu Hamakita Plant Center

Princess Road Festival

[late Mar.] 090-7681-5724
Hosoe-cho, Kita-ward:
Kiga Sekisho and surrounding area

April

Onzo Festival

[2nd Sat. of Apr.]
Mikkabi-cho, Kita-ward: Ubuginu Shrine
About 1,000 Somei Yoshino cherry trees will be in full bloom. Night-time cherry blossom viewing is also possible during the festival period.



Inasa Cherry Blossom Festival

May

Hamamatsu Festival

[May 3~5] Hamamatsu
city center, Nakatajima Sand Dunes

Shibukawa Tsutsuji (Azalea) Festival

[mid- to late May] 053-522-4720
Inasa-cho, Kita-ward:
Shibukawa Tsutsuji Park

Enshu Hamakita Hiryu Festival

[1st Sat. & Sun. of Jun.]
Hamakita-ward:
Tenryu River green zone
Various events are held here including the Hiryu Fire Festival and Hamakita Kite Festival.

Hana Shobu (Iris)・Hydrangea Festival

[late May ~ mid-Jun.] 053-487-0511
Kanzanji-cho, Nishi-ward: Hamamatsu Flower Park

June

Terao no Buka Kite Festival

[early to mid-Jun.] 053-969-0388
Tatsuyama-cho, Tenryu-ward: Terao area

July

Kawaibuchi Festival

[1st Sat. of Jul.] 053-522-4720
Inasa-cho, Kita-ward: Kawaibuchi Park

Enshu Dainenbutsu

[Jul.15] Shikatani-cho,
Naka-ward: Bttle of Saigagake Museum

Hosoe Shrine Gion Festival

[Jul.15] Hosoe-cho,
Kita-ward: Hosoe Shrine

Suwa Shrine Dedicatory Fireworks

[Fri. and Sat. in late Jul.] 053-594-1111
Arai, Kosai-city
(Arai elementary and jr. high school)

August

"Takizawa no Hoka Dance", prefecture designated cultural folk asset

[Aug.13] 053-428-3696
Takizawa-cho, Kita-ward: Rinkeiji Temple

Hamamatsu Tanabata Yukata Festival

Hamamatsu Tanabata Yukata Festival
Executive Committee 053-452-1114
[early Aug.] City center,
Downtown area
Hamamatsu Tanabata
Yukata Festival



September

Inoyagu Shrine Reitaisai

[Sep.22] Inasa-cho, Kita-ward:
Inoyagu Shrine
This event celebrates the prince,
Muneyoshi Shinnou, enshrined
at Inoyagu Shrine. Roughly 200
large and small fireworks are set
off in his honor.



Misakubo Festival

[3rd Sat/Sun in September] Misakubocho, Tenryu
Ward: Misakubocho Shopping Arcade
The festival includes a wide variety of events, such
as a costume contest and pull-cart food vendors.

October

Yokoo Kabuki Periodical Performance

[Second Saturday and Sunday of October] 053-522-4720
Inasa-cho, Kita-ward: Kaimeiza

Odaiko (large drum) Festival

[Oct. or Nov.] Maisaka-cho, Nishi-ward: Kisa Shrine

Hamakita Manyo Festival

[mid-Oct.] Hamakita-ward: Manyo no Mori Park
Hamakita Manyo Festival
Executive Committee 053-586-6201

Toge no Kunitori Tsunahiki Gassen (tug of war)

[4th Sun. of Oct.] 053-987-0432
Misakubo-cho, Tenryu-ward: Hyogoshi Pass

Enshunada Natural Tora Blowfish Festival

[mid-Oct. ~ end of Feb.] 053-487-0152
Kanzanji-cho, Nishi-ward area

November

Shirakura Gorge Maple Festival

Tenryu Sightseeing Information Center
(Tatsuyama Branch) [mid-Nov.] 053-969-0388
Tatsuyama-cho Tenryu-ward: Shirakura
Senior Citizen's Community Center, etc.

Inasa Puppet Play Festival

Inasa Puppet Play Festival Executive Committee
053-523-1168

[late Nov.] Inasa-cho, Kita-ward:
Inasa Multipurpose Training Center, etc.

One of the few
puppet show festivals
in Japan, where over
30 performing groups
gather from all over
the nation. There are
also exhibits of local
products and more.



Eel Festival

Hamana Commercial Association 053-592-3111
[First Sunday of November] Lake Hamana
Garden Park, Murakushicho, Nishi Ward

Hokuen Industry Festival

053-925-5151
Tenryu Commercial Association
[early to late November]
This industry festival is held on Saturdays
and Sundays in November, in various districts of Tenryu
Ward. Both stage and field events are held, including
regional specialties and tasting markets.

December

Kanzanji Fire Festival

[Dec.15] 053-487-0107
Kanzanji-cho Nishi-ward: Atago Shrine

Akiha Fire Festival

[Dec.15 & 16] 053-983-0066
Haruno-cho, Tenryu-ward: Akiha Shrine・Akihashi Temple



Akiha Fire
Festival

Route map around Hamamatsu City and Kosai City

The map illustrates the following routes and services:

- San-En Nanshin Expressway:** A major highway running vertically on the left side of the map.
- JR Tōkaidō Shinkansen:** The main high-speed rail line running horizontally through the center.
- JR Tōkaidō Line:** A branch of the Shinkansen running horizontally on the right side.
- Entetsu Bus Lines:**
 - Entetsu Bus Okuyama Line (Purple):** Connects Hamamatsu to Okuyama and Inuyoshi.
 - Entetsu Bus Akiha Line (Blue):** Connects Hamamatsu to Akiha and Nishikajima.
 - Entetsu Bus Hamakita Community Bus (Yellow):** Connects Hamamatsu to Hamakita and Nishikajima.
 - Entetsu Bus Nishikajima Line (Red):** Connects Hamamatsu to Nishikajima.
- Akiha Bus Service (Green):** Connects Hamamatsu to Akiha and Nishikajima.
- Tenryu Hamanako Line (Orange):** Connects Hamamatsu to Tenryu and Hamanako.
- Local Bus Services:** Includes the Hamakita Community Bus and the Nishikajima Line.
- Transfer Points:** Key locations for transferring between different bus lines and the Shinkansen, such as Hamamatsu Station, Hamamatsu Kita Bus Stop, and Hamamatsu Nishi IC.
- QR Code:** A QR code for the EMot app is located in the bottom right corner.

Train	
JR Tokai Telephone Center	050-3772-3910
Entetsu Shin Tetsudo Office	053-435-0221
Tenryu Hamanako Line	053-925-2276

Bus	
Entetsu Bus Terminal	053-455-2255
Hamakita Community Bus	053-584-4000
Kosai City Community Bus	053-584-4000
Akiha Bus Service	0538-85-2141
JR Tokai Bus Nagoya Travel Center	052-563-0489

Hamamatsu Station Car Rental Office	053-453-3186
Hamamatsu Station Taxi Information	053-453-0201

Hamanako Sightseeing Boat	053-487-0228
Sightseeing Taxi	
Hamamatsu Station Taxi Information	053-453-0201

Public Facilities Inquiries

Names	TEL
Main police stations	Hamamatsu Central Police Station 053-475-0110
	Hamamatsu Station Front Police Box 053-452-3634
	South Police Box 053-453-1985
	Hamamatsu Castle Park Front Police Box 053-453-3262
	Higashiiba Police Box 053-454-4493
	Hamamatsu Station South Police Box 053-456-2777
	Hamamatsu East Police Station 053-460-0110
	Hamamatsu West Police Station 053-484-0110
	Hamakita Police Station 053-585-0110
	Tenryu Police Station 053-926-0110
	Hosoe Police Station 053-522-0110
	Kosai Police Station 053-574-0110

Main post offices	Hamamatsu Post Office*	*Phone numbers are different depending on the service.
	Post Service (except collection and delivery), Insurance Service	053-453-2308
	Postal Banking Service	053-453-2307
	Hamamatsu West Post Office	053-454-0414
	Hamamatsu East Post Office	053-467-1192
	Hamamatsu North Post Office	053-437-4913
	Hamakita Post Office	053-586-3602
	Tenryu Post Office	053-925-2501
	Kosai Post Office	0570-943-817

Main hospitals	Enshu Hospital	053-453-1111
	Hamamatsu Medical Center	053-453-7111
	Hamamatsu Rosai Hospital	053-462-1211
	Seirei Hamamatsu Hospital	053-474-2222
	Seirei Mikatahara Hospital	053-436-1251
	Hamamatsu University School of Medicine Hospital	053-435-2111
	Hamamatsu Red Cross Hospital	053-401-1111
	Kosai Hospital	053-576-1231
	Hamana Hospital	053-577-2333

Main banks	Resona Bank Hamamatsu Branch	053-453-0156
	Mitsubishi UFJ Bank Hamamatsu Branch	053-452-5141
	Mizuho Bank Hamamatsu Branch	053-452-3111
	Shizuoka Bank Hamamatsu Sales Department	053-454-2111
	Suruga Bank Hamamatsu Branch	053-454-1050
	Rokin Hamamatsu Chuo Branch	053-456-9111
	Hamamatsu Iwata Shinkin Bank, Main Office Sales Department	053-454-6141
	Enshu Shinkin Bank, Main Office Sales Department	053-472-2115
	Mitsui Sumitomo Bank Hamamatsu Branch	053-455-2111
	JA Topia Hamamatsu Main Office	053-476-3111

 The list page starts here.

List Contents

Tourism Information Inquiries	41
Public Facilities Inquiries	40
Guide to Transportation around Hamamatsu City and Kosai City	38
Festival Calender of Hamamatsu and Lake Hamana	36
Experience Calender of Hamamatsu and Lake Hamana	34

Tourism Information Inquiries

Names and Addresses	TEL
Hamamatsu City Tourism Information Center Inside of JR Hamamatsu Sta. 265-16, Sunayama-cho, Naka-ward, Hamamatsu-city 430-0926	053-452-1634
Kanzanji Onsen Tourism Association 1832-1, Kanzanji-cho, Nishi-ward, Hamamatsu-city 431-1209	053-487-0152
Maisaka-cho Tourist Association 3775-2, Bentenjima, Maisaka-cho, Nishi-ward, Hamamatsu-city 431-0214	053-592-0757
Bentenjima Ekimae Tourist Information Center 3286, Bentenjima, Maisaka-cho, Nishi-ward, Hamamatsu-city 431-0214	053-592-4016
Oku Lake Hamana Tourism Center 429-1, Kiga, Hosoe-cho, Kita-ward, Hamamatsu-city 431-1305	053-522-4720
Tenryu Tourism Center 114-2, Akura, Futamata-cho, Tenryu-ward, Hamamatsu-city 431-3311	053-925-5845
Hamamatsu and Lake Hamana Tourism Bureau Zaza City Hamamatsu Central Bldg. 5F, 100-1, Kajimachi, Naka-ward, Hamamatsu-city 430-0933	053-458-0011
Kosai and Arai Tourism Association (Inside of Kaikokan) Arai, Arai-cho, Kosai-city 431-0302	053-596-9255

Tourism Volunteer Guide

Group Name	TEL	Facilities to Visit
Hamamatsu Volunteer Sightseeing Guide Group	053-456-1303	Hamamatsu Festival Pavilion, Hamamatsu Castle, etc.
Maisaka-shuku Guide Group	053-592-3202	Tokaido Pine Trees, Maisaka-shuku Wakihonjin, etc.
Lake Okuhamana Tourism Guide Group	053-522-4720	Kohokugosan (five temples), Inoya, Kiga-shuku, etc.
Hosoe-cho History & Literature Group	053-527-2941	Kiga Sekisho (Iru-kuguri), Hime-kaido Road, etc.
Igusa Group	053-523-1456	Museum of History and Folklore of Hamamatsu Hime-kaido and Dotaku Daijukuji Temple, Mikan-no-Sato Museum, etc.
Tenryu Furusato Guide Group	053-926-1556	Nobuyasu Mausoleum, Futamata Castle Ruins, Tobayama Castle Ruins, etc.
Arai Furusato Guide Group	053-594-0540	Maisaka-Shuku, Arai-Shuku, Shirasuka -Shuku, etc.
Misakubo Tourism Volunteer Guide Group	053-987-0432	Takane Castle Ruins, etc.
Arai-shuku Historic Site Guide Group	053-594-3615	Arai Barrier, Kinokuniya Museum, etc.

*Information above is current as of September 2022.